

Register in
Performance
Matters:
Now!

October 19, 2023

2023 FFSD FALL PROFESSIONAL LEARNING



FFSD PDC BROCHURE



Updated 9/27/23

TABLE OF CONTENTS

Table of Contents.....	2
Welcome Letter.....	3
Schedule of the Day.....	4
Elementary Info.....	5
• K-5 ELA and ELL.....	6
• Early Ed and ECSE.....	7
• K-5 Library.....	7
• K-5 Art.....	7
• K-5 Music.....	8
• K-5 PE	8
• K-5 Counselor/SW.....	9
• K-5 Restorative Class Spec.....	9
• K-5 Building Support Spec.....	9
Secondary Info.....	10
• 6-12 Social Studies.....	11
• 6-12 ELA and ELL.....	11
• 6-12 Library.....	12
• 6-12 Art.....	12
• 6-12 Music.....	12
• 6-12 Theater.....	13
• 6-12 PE and Health.....	13
• 6-12 Math.....	14
• 6-12 Science.....	14
• 6-12 CTE.....	14
• 6-12 World Languages.....	14
• 6-12 Avid.....	14
• 6-12 AP/IB.....	14
• 6-12 Full-Time Edgenuity.....	14
• Choice Sessions.....	15
Flu Shot Clinic Info.....	17

fall VIBES



Happy Fall! As the end of quarter 1 is nearing, the FFSD PDC and Curriculum teams are excited to spend time with all certified staff to engage in professional learning. The purpose of this catalog is to orient you in the schedule for the day and provide guidance for registration.

In order to ensure accurate tracking for certification and also for logistical planning purposes, it is imperative that all certified staff register for the session(s) that they plan to attend. Registering prior to the session is the only way you will be able to get credit for attendance.

If you need help registering, please reach out to your building PDC Rep. If you are unable to log into Performance Matters, please email Earl Joiner.

"Develop a passion for learning. If you do, you will never cease to grow."
— Anthony J. D'Angelo

Dear FFSD Educator,

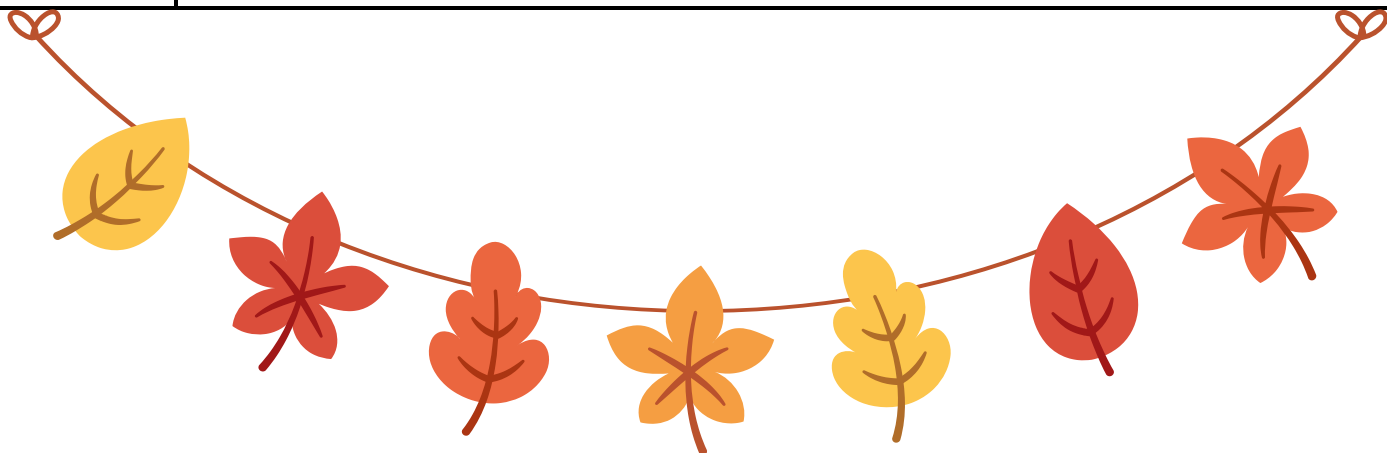
This catalog is divided into an Elementary Section, pages 5-9, for all PreK - 5 teachers, and a Secondary section, pages 10-16, for all 6-12 teachers. Please navigate to the appropriate section and locate your content area for session and registration information. Some content areas will need to register for more than one session. If you are unsure what to register for, please email the curriculum coordinator for your content area for guidance.

The following table provides a summary, by content group, of the session(s) that you should register for. All section #'s are listed below and can be found under Course #11011 in Performance Matters. The table of contents on page 2 of this catalog will also assist you in locating your content area and grade span.

We are offering a flu shot clinic at both STEAM High and McCluer High during this date. See the information at the back of this catalog for more details!

Master Schedule

Group	Location	Session 1 8:00 - 10:00	Session 2 10:15 - 12:15	Required Curriculum 1:30 - 4:00
6-12 Social Studies	Off Site	Federal Reserve #13718		
6-12 ELA and ELL	STEAM High	McGraw Hill Training #13719-13720		
6-12 Math	STEAM High	Professional Learning Keynote: Tamoya Rose-Watson #13739	Choice session (see selections for #)	Math rotation # 13727
6-12 Science	STEAM High			Science and Engineering Practices #13728
CTE	STEAM High			CTE Planning Session #13729
6-12 Counselors	STEAM High			Almost Home #13730
K-12 Social Workers	STEAM High			Collab with SLU #13731
K-5 Counselors	STEAM High			K-5 Counselors Input training and collab #13732
6-12 World Language	STEAM High			WL Input training and collab #13733
Avid	STEAM High			Avid Input training and collab #13734
AP/IB	STEAM High			AP/IB Input training and collab #13735
Full Time Edgenuity	STEAM High			Edgenuity Webinar #13736
K-12 Restorative Classrooms	STEAM High			Trauma Informed Practices #13737
K-12 Building Support Specialists	STEAM High			Building Support Specialist Input training and collab #13738
K-5 Gen Ed and ELL	McCluer	W & W Module and Lesson Study #13711 - 13716		
PreK/ECS	McCluer	DIAL-4 PD #13717		
K-12 Library	McCluer	Library Input and collab #13721		
K-12 Art	McCluer	Art Curriculum and Learning Day #13722	SLAM	
6-12 Music	McCluer	Secondary Music Curriculum and Learning Day #13723		
6-12 Theater	McCluer	Theater Curriculum and Learning #13724		
K-5 Music	Parker Road	Music and the Brain #13725		
K-12 PE/Health	McCluer	PE Health Curriculum and Learning Day #13726		





ELEMENTARY

October 19

PM Course # 11011

K- 5 Classroom and ELL

K-5 classroom teachers and ELL teachers will engage in ELA curriculum professional learning for the entire day. The session is a Module and Lesson study:



MODULE AND LESSON STUDY

Essential Question: How do you prepare to teach *Wit & Wisdom*®?

Goals:

- Reinforce knowledge of *Wit & Wisdom*'s design and key elements.
- Apply an approach to module and lesson preparation for successful implementation.
- Understand productive struggle and its benefits; develop skills to support students in productive struggle.

Details are as follows:

Time 8:00 am - 4:00 pm

Location (Buildings listed below - room number in the Performance Matters session info)

- K-2: Halls Ferry
- 3-5: McCluer

Performance Matters Section All teachers, ISLs, and administrators should select one and register in advance, write-in registration will not be available on the day of the event:

- **Kindergarten** Section # 13711
- **First** Section # 13712
- **Second** Section # 13713
- **Third** Section # 13714
- **Fourth** Section # 13715
- **Fifth** Section # 13716

Materials to Bring

- W&W Teacher Edition (Module 2)
- Core Text(s)
- Things to take notes/annotate (highlighter, notebook, post-it notes, etc.)

Additional Information

There will be a flu shot clinic available at McCluer during your lunch break. Please see the information at the back of this catalog for more details.



Early Ed and ECSE

Early Ed and ECSE teachers will engage in DIAL-4 professional earning for the entire day. Details are as follows:

Time 8:00 am - 4:00 pm

Location McCluer High - Little Theater

Performance Matters Section #13717 All teachers and administrators should in advance, write-in registration will not be available on the day of the event.

Additional Information

There will be a flu shot clinic available at McCluer during your lunch break. Please see the information at the back of this catalog for more details.

K-12 Library

Details are as follows:

Time 8:00 am - 4:00 pm

Location McCluer High - Library Media Room

Performance Matters Section #13721 All teachers and administrators should in advance, write-in registration will not be available on the day of the event.

Additional Information

There will be a flu shot clinic available at McCluer during your lunch break. Please see the information at the back of this catalog for more details.

K-12 Art

K-12 Art teachers will engage in curriculum learning in the morning and will visit SLAM in the afternoon. Details are as follows:

Time 8:00 am - 4:00 pm

Location McCluer High - 2002 and 2004

Performance Matters Section #13722 All teachers and administrators should in advance, write-in registration will not be available on the day of the event.

Additional Information

There will be a flu shot clinic available at McCluer during your lunch break. Please see the information at the back of this catalog for more details.

K-5 Music

K-5 Music teachers will be working with Music and the Brain at Parker Road for the day. Details are as follows:

Time 8:00 am - 4:00 pm

Location Parker Road

Performance Matters Section #13725 All teachers and administrators should in advance, write-in registration will not be available on the day of the event.

Additional Information

There will be a flu shot clinic available at McCluer during your lunch break. Please see the information at the back of this catalog for more details.

K-12 PE

K-5 PE and Health teachers will engage in learning rotations. Details are as follows:

Time 8:00 am - 4:00 pm

Location McLuer High - M1 Gym

Performance Matters Section #13726 All teachers and administrators should in advance, write-in registration will not be available on the day of the event.

Additional Information

There will be a flu shot clinic available at McCluer during your lunch break. Please see the information at the back of this catalog for more details.



K-12 Counselors, Social Workers, Restorative Classrooms, Building Support Specialists

Your day will be divided into 3 parts (listed below) and you will need to register for 3 sections. Please carefully read the section below and the Choice Options section so that you can locate the correct Section #. All teachers and administrators should select one and register in advance, write-in registration will not be available on the day of the event.

Location: STEAM High

Schedule:

Session 1: 8:00 - 10:00 Professional Learning Keynote: STEAM High Cafe

Session 2: 10:15 - 12:15 Choice Session: See the “Choice Options” portion of this catalog for selections

Session 3: 1:30 - 4:00 Curriculum Training

Additional Information

There will be a flu shot clinic available at STEAM High during your lunch break. Please see the information at the back of this catalog for more details.

The schedule for the day is in the following table, choice sessions for session 2 are listed on pages 15-16.

Group	Location	Session 1 8:00 - 10:00	Session 2 10:15 - 12:15	Required Curriculum 1:30 - 4:00
6-12 Social Studies	Off Site	Federal Reserve #13718		
6-12 ELA and ELL	STEAM High	McGraw Hill Training #13719-13720		
6-12 Math	STEAM High	Professional Learning Keynote: Tamoya Rose-Watson #13739	Choice session (see selections for #)	Math rotation # 13727
6-12 Science	STEAM High			Science and Engineering Practices #13728
CTE	STEAM High			CTE Planning Session #13729
6-12 Counselors	STEAM High			Almost Home #13730
K-12 Social Workers	STEAM High			Collab with SLU #13731
K-5 Counselors	STEAM High			K-5 Counselors Input training and collab #13732
6-12 World Language	STEAM High			WL Input training and collab #13733
Avid	STEAM High			Avid Input training and collab #13734
AP/IB	STEAM High			Utilizing AP Classroom for Progress Checks #13735
Full Time Edgenuity	STEAM High			Edgenuity Webinar #13736
K-12 Restorative Classrooms	STEAM High			Trauma Informed Practices #13737
K-12 Building Support Specialists	STEAM High			Building Support Specialist Input training and collab #13738





SECONDARY

October 19

PM Course # 11011

6-12 Social Studies

This PD day will be dedicated to an on-site learning experience at the Federal Reserve. Details are as follows:

Time 8:00 am - 4:00 pm

Arrival and Drop Off Location STEAM High Front

Performance Matters Section #13718 All teachers and administrators should in advance, write-in registration will not be available on the day of the event.

6-12 ELA and ELL

6-12 ELA teachers and ELL teachers will engage in ELA curriculum professional learning for the entire day. Details are as follows:

Time 8:00 am - 4:00 pm

Location STEAM High (Room number found in Performance Matters)

Performance Matters Section All teachers, ISLs, and administrators should in advance, write-in registration will not be available on the day of the event:

- **6-8 ELA** Section # 13719
- **9-12 ELA** Section # 13720

Materials to Bring

- Charged device

Additional Information

There will be a flu shot clinic available at STEAM High during your lunch break. Please see the information at the back of this catalog for more details.



K-12 Library

Details are as follows:

Time 8:00 am - 4:00 pm

Location McCluer High - Library Media Room

Performance Matters Section #13721 All teachers and administrators should select one and register in advance, write-in registration will not be available on the day of the event.

Additional Information

There will be a flu shot clinic available at McCluer during your lunch break. Please see the information at the back of this catalog for more details.

K-12 Art

K-12 Art teachers will engage in curriculum learning in the morning and will visit SLAM in the afternoon. Details are as follows:

Time 8:00 am - 4:00 pm

Location McCluer High - 2002 and 2004

Performance Matters Section #13722 All teachers and administrators should in advance, write-in registration will not be available on the day of the event.

Additional Information

There will be a flu shot clinic available at McCluer during your lunch break. Please see the information at the back of this catalog for more details.

6-12 Music

6-12 Music teachers will engage in Secondary Music Curriculum and Learning Day Details are as follows:

Time 8:00 am - 4:00 pm

Location McCluer High - 2126

Performance Matters Section #13723 All teachers and administrators should in advance, write-in registration will not be available on the day of the event.

Additional Information

There will be a flu shot clinic available at McCluer during your lunch break. Please see the information at the back of this catalog for more details.

6-12 Theater

6-12 Theater teachers will engage in Secondary Music Curriculum and Learning Day
Details are as follows:

Time 8:00 am - 4:00 pm
Location McCluer High - 2116/2118

Performance Matters Section #13724 All teachers and administrators should select one and register in advance, write-in registration will not be available on the day of the event.

Additional Information
There will be a flu shot clinic available at McCluer during your lunch break. Please see the information at the back of this catalog for more details.

K-12 PE and Health


K-12 PE and Health teachers will engage in learning rotations. Details are as follows:

Time 8:00 am - 4:00 pm
Location McLuer High - M1 Gym

Performance Matters Section #13726 All teachers and administrators should in advance, write-in registration will not be available on the day of the event.


Additional Information
There will be a flu shot clinic available at McCluer during your lunch break. Please see the information at the back of this catalog for more details.

Having trouble finding the course in Performance Matters? Be sure to select "View All Sections" on the botton of the screen.

Instructor Led




#11000 August 16, 2023 - District PD

District PD day to focus on FFSD curriculum and resources for beginning the school year.

Recommend

Views 0

Select a section to register

#13681 6-12 World Languages > Morning	Instructor(s): TIFFANY N BUCHANAN	 Seats:200 left of 200	Register
#13680 6-12 CTE > Morning	Instructor(s): BRADLEY C JOHNSON	 Seats: left of 200	Register
#13679 6-12 CTE > Afternoon	Instructor(s): BRADLEY C JOHNSON	 Seats:200 left of 200	Register

[View All Sections](#)

6-12 Math, Science, CTE, World Language, Avid, AP/IB, Full Time Edgenuity
K-12 Counselors, Social Workers, Restorative Classrooms, Building Support Specialists
Your day will be divided into 3 parts (listed below) and you will need to register for 3 sections. Please carefully read the section below and the Choice Options section so that you can locate the correct Section #. All teachers and administrators should select one and register in advance, write-in registration will not be available on the day of the event.

Location: STEAM High
Schedule:

- Session 1:** 8:00 - 10:00 Professional Learning Keynote: STEAM High Cafe
Session 2: 10:15 - 12:15 Choice Session: See the “Choice Options” portion of this catalog for selections
Session 3: 1:30 - 4:00 Curriculum Training

Additional Information
There will be a flu shot clinic available at STEAM High during your lunch break. Please see the information at the back of this catalog for more details.

The schedule for the day is in the following table, choice sessions for session 2 are listed on the following page.

Group	Location	Session 1 8:00 - 10:00	Session 2 10:15 - 12:15	Required Curriculum 1:30 - 4:00
6-12 Social Studies	Off Site	Federal Reserve #13718		
6-12 ELA and ELL	STEAM High	McGraw Hill Training #13719-13720		
6-12 Math	STEAM High	Professional Learning Keynote: Tamoya Rose-Watson #13739	Choice session (see selections for #)	Math rotation # 13727
6-12 Science	STEAM High			Science and Engineering Practices #13728
CTE	STEAM High			CTE Planning Session #13729
6-12 Counselors	STEAM High			Almost Home #13730
K-12 Social Workers	STEAM High			Collab with SLU #13731
K-5 Counselors	STEAM High			K-5 Counselors Input training and collab #13732
6-12 World Language	STEAM High			WL Input training and collab #13733
Avid	STEAM High			Avid Input training and collab #13734
AP/IB	STEAM High			Utilizing AP Classroom for Progress Checks #13735
Full Time Edgenuity	STEAM High			Edgenuity Webinar #13736
K-12 Restorative Classrooms	STEAM High			Trauma Informed Practices #13737
K-12 Building Support Specialists	STEAM High			Building Support Specialist Input training and collab #13738



Choice Session 2 Descriptions

6-12 Math, Science, CTE, World Language, Avid, AP/IB/DC/DE, Full Time Edgenuity

K-12 Counselors, Social Workers, Restorative Classrooms, Building Support Specialists

Session Title	Session Description	Session #
Engaging Students with Nature	This session will be held at Little Creek Nature Area. Participants will: 1) EXPLORE resources that are available to connect students with nature, 2) EXPERIENCE a hands-on nature-based activity that can be tailored to different ages, and 3) LEARN a thing or two about how nature works.	13744
Teaming Building and Problem Solving with Nature	This session will be held at Little Creek Nature Area. Participants will engage in team building and problem solving to collaboratively: 1) EXPLORE resources that are available to build students' capacity to work together, 2) EXPERIENCE a team building experience that is available to different ages, and 3) LEARN how students can enjoy nature. Instruction for appropriate clothing or shoes will follow. (hiking on trails etc).	13762
HyFlex Teachers and Facilitators	This session is geared towards classroom management, facilitation, and instructional strategies for HyFlex Teachers and Facilitators	13763
Ellevation to support your ELL Students	This session is designed for Gen Ed classroom teachers who are participating in the EL PD cohort. The group will take a deep dive into ELL Data and professional development modules to support ELL students and their content teachers.	13761
Bridging The Discipline Gap	Utilizing equitable practices to bridge the disciple gap, inclusive of staff & students.	13743
Using Leadership Circles in the Classroom	Beyond the 'Get to Know You Circle' and 'Restorative Circle,' the Leadership Circle provides opportunities for students to teach, model, and practice classroom expectations, build communication skills, and develop leadership skills all at the same time. Build it into your Advisory, make it part of your classroom, or both. Develop student voice through ten minute weekly circle structures. Find out what can be done to build a classroom community with students at the center. This session brings practicality to the Relationship-Centered Learning protocols and is appropriate for grades 3-12.	13747
Young Person Mental Health First Aid	Ms. Channel-West and Jeff Sabbe attended Young Person Mental Health First Aid. This session would highlight the salient points that will benefit our staff in helping our students. We would cover warning signs to watch for. We would then describe the steps and process to follow when you suspect a student is either in crisis or in danger of reaching that level. Suicide, Substance Abuse, ADHD, Depression, Eating Disorders, Anxiety, Impulse Control, PTSD, and Psychosis will all be addressed.	13748
6-8 Science > Differentiated Instruction	Using MySci in the 6-8 science classrooms to meet the needs of all students and also customize based on your specific data.	13741
Bridging the Gap: Leveraging Outside Resources to Enhance Your Science Lesson	Teachers will learn about various resources they can utilize such as virtual field trips, Skype with a Scientist, real field trips and much more to enhance your science lessons and maximize student engagement.	13749
Dream Town: An Examination of Shaker Heights' Experience with Racial Inequity and the achievement gap	In this searing and intimate examination of the ideals and realities of racial integration, award-winning Washington Post journalist Laura Meckler tells the story of a decades-long pursuit in Shaker Heights, Ohio, and uncovers the roadblocks that have threatened progress time and again?in housing, in education, and in the promise of shared community. Join this session for a robust discussion about the topic of the book and a chance to win a copy for yourself!	13746
CT3...It All Makes Sense	Incorporating high impact strategies into your classroom	13751
Academic Discourse in the Secondary Mathematics Classroom	Malinda Baker will facilitate this session focused on Academic Discourse in the Secondary Mathematics Classroom. Academic discourse in the math classroom is more than simply talking about math. It is a set of tools and practices that make both learners' and teachers' thinking visible. How learners talk about mathematics reflects in part what they understand about mathematics.	13750
Grade 5-10: Math Activity	1. two origami activities to review/teach concepts of geometry concepts. 2. Circle activities-teaching concepts/definition -making concentric circles.3. Prime numbers-sieve of Eratosthenes 4. Finding real numbers using the charts 5. Making coordinate planes + Quadrants 6.Making Pinwheels for fun -reviewing concepts of gemetry-7. Korean (Japanese)way to factor trinomials.) 8. Circle plate	13742
DESSA Data Dive in Branching Minds	DESSA Data Dive in Branching Minds	13759

Choice Session 2 Descriptions

6-12 Math, Science, CTE, World Language, Avid, AP/IB/DC/DE, Full Time Edgenuity
K-12 Counselors, Social Workers, Restorative Classrooms, Building Support Specialists

Session Title	Session Description	Session #
Working Smarter with Spreadsheets	We will work on getting comfortable using spreadsheets to make data tracking and documentation easier. This includes learning and practicing the basic features (like formatting and sorting) as well as getting started with some of the more advanced features (like formulas and conditional formatting). This session is specifically designed for Social Workers and Counselors	13740
The Aligned Teacher: A Guide to Sanity When You Just Want to Quit,	Join Meredith Daniels, author of The Aligned Teacher: A Guide to Sanity When You Just Want to Quit, in a discussion of practical tips to keep your sanity while also serving the students in your classroom.	13760
EVERFI	About EVERFI: EVERFI helps teachers and schools bring real-world skills to students through our digital programs. Thanks to partners like the Kansas City Chiefs and the Truth Initiative, we provide standards-aligned, self-paced, and interactive online lessons with built-in assessments free to schools. By collaborating with teachers, we ensure that each course can be flexibly used to help deliver real-world learning in the classroom or remotely. ***Counselors will receive their own separate training on this during curriculum time.	13745
Culturally Responsive Teaching and Integration into the content areas	Culturally responsive teaching is a research-based approach to teaching. It connects students' cultures, languages, and life experiences with what they learn in school. These connections help students access rigorous curriculum and develop higher-level academic skills. This session, focused around the work of Zaretta Hammond, will look at how to integrate culturally responsive teaching into any content area.	13753
Enhancing School Community in your Classroom	Building a strong school community begins in your classroom. This session will focus on immediate steps that you can take to enhance community within your classroom.	13752
Trauma Informed Practices and Self-Regulation Strategies	This course will define trauma, describe the qualities of a trauma-informed educator, and discuss self-regulation strategies for the classroom. Presenters will specifically go over how traumatic experiences affect learning. Case study examples will be provided as well as participants will be encouraged to apply the content to their own students. Handouts and tools will be provided as applicable.	13758

Flu Shot Clinic @ PD Locations!



GET YOURSELF AND YOUR FAMILY
VACCINATED!

A yearly flu vaccine is the first and most important step in protecting against flu viruses.

Everyone 6 months or older should get an annual flu vaccine. Protect Yourself. Protect Your Family. Get Vaccinated. #FightFlu

STAY HEALTHY FOR WHAT MATTERS

Family, Friends and You




GET VACCINATED!

- Convenient:** Visiting Nurse Association will be at this site to administer flu vaccines. It doesn't get any easier than this!
- Worry-free:** Flu vaccinations are given by specially trained nurses (RNs). Questions? Ask these flu experts.
- Economical:** Most major insurances accepted. Bring your insurance card with you.

To participate in the
Flu Shot Clinic you
will need the
following:

- Insurance Card
- Completed Consent form found [here](#)

DATE:	October 19, during District PD Day	<p>You've counted on us for healthcare needs for over 100 years.</p> <p>Get your flu vaccination from the professionals at VNA.</p>  <p>314.918.7171 vnastl.org</p>
TIME:	10am - 1pm	
LOCATION:	McCluer 2109 STEAM High 1295	

Reach out to Dr. Tate-Patterson
for any questions



Accepted Commercial Insurances – 2023

-  Aetna
-  Anthem-Blue Cross and Blue Shield (**No EPO's**)
-  Cigna (**No EPO's**)
-  Coventry
-  HealthLink
-  Humana
-  TRICARE
-  United HealthCare
 - (including AllSavers, GoldenRule, UMR, & GEHA)

(Continued on page 2)



7/23



Medicare Plans:

- Medicare Part B
- Aetna (HMO/PPO)
- Anthem/BCBS Advantage (HMO/PPO)
- Essence



Medicare Advantage Plans – PPO Only (no HMO):

- Cigna
- Coventry
- Humana
- UHC (including PPO AARP)



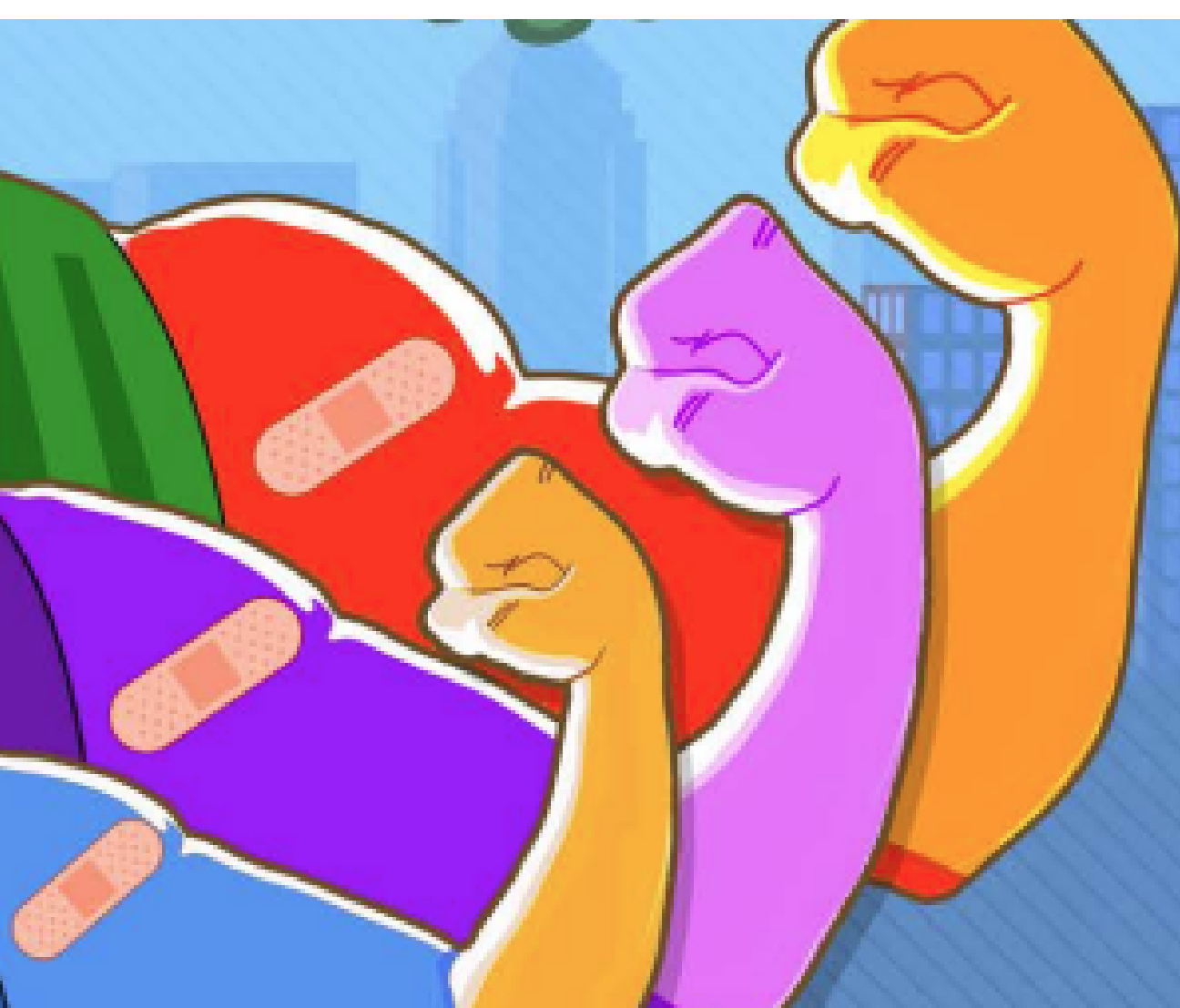
Missouri Medicaid (18 and Younger Only)

- Homestate Health
- Missouri Care
- United HealthCare Community Plans
- Healthy Blue
- Ambetter
- MO Healthnet

****VNA cannot accept Medicaid plans for those over the age of 18.



1/23



GET YOURSELF AND YOUR FAMILY VACCINATED!

A yearly flu vaccine is the first and most important step in protecting against flu viruses.

Everyone 6 months or older should get an annual flu vaccine. Protect Yourself. Protect Your Family. Get Vaccinated. #FightFlu